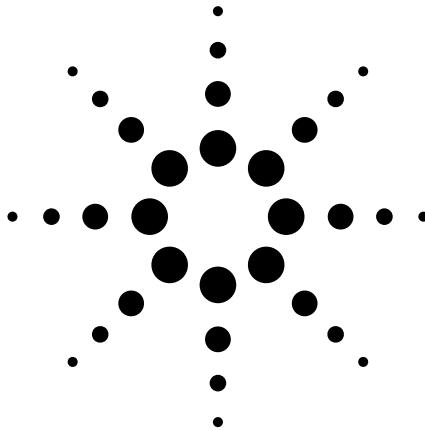
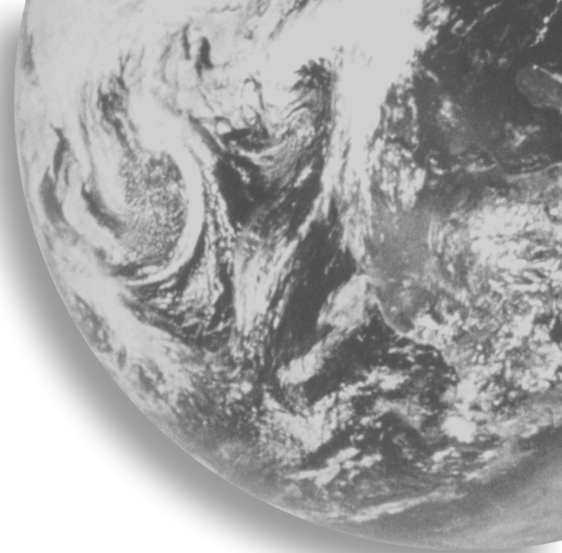


Agilent Technologies
E7475A GSM
Wireless Solutions



System Information
Guide



Agilent Technologies

System Information Guide

**Agilent Technologies E7475A GSM
Wireless Solutions**

Manual part number
E7475-90011

Edition/Print Date

All Editions and Updates of this manual and their creation dates are listed below.

First Edition ... September 2000

Notices

Copyright © Agilent Technologies, Inc 1997, 1998, 1999, 2000 All Rights Reserved.

No part of this manual may be reproduced in any form or by any means (including electronic storage and retrieval or translation into a foreign language) without prior agreement and written consent from Agilent Technologies, Inc. as governed by United States and international copyright laws.

Trademarks

ArcView ® is a registered trademark of Environmental Systems Research Institute, Inc.

MapInfo ® is a registered trademark of MapInfo Corporation.

Pentium ® is a registered trademark of Intel Corporation.

PlaNET ® is a registered trademark of Mobile Systems International.

Adobe ® is a trademark of Adobe Systems Incorporated.

Windows NT ® and Windows 95 ® and Windows 98 ® are U.S. registered trademarks of Microsoft Corporation.

Hewlett-Packard ® is a registered trademark of Hewlett-Packard Limited.

Warranty

The material contained in this document is subject to change without notice. Agilent Technologies makes no warranty of any kind with regard to this material, including, but not limited to, the implied warranties of merchantability and fitness for a particular purpose. Agilent Technologies shall not be liable for errors contained herein or for incidental or consequential damages in connection with the furnishing, performance, or use of this material.

Technology Licenses Notice

The Hardware and/or Software described in this document are furnished under a license and may be used or copied only in accordance with the terms of such license.

Restricted Rights Legend

If Software is for use in the performance of a U.S. Government prime contract or subcontract, Software is delivered and licensed as “Commercial computer software” as defined in DFAR 252.227-7014 (June 1995), or as a “commercial item” as defined in FAR 2.101(a) or as “Restricted computer software” as defined in FAR 52.227-19 (June 1987) or any equivalent agency regulation or contract clause. Use, duplication or disclosure of Software is subject to Agilent Technologies’ standard commercial license terms, and non-DOD Departments and Agencies of the U.S. Government will receive no greater than Restricted Rights as defined in FAR 52.227-19(c)(1-2) (June 1987). U.S. Government users will receive no greater than Limited Rights as defined in

FAR 52.227-14 (June 1987) or DFAR 252.227-7015 (b)(2) (November 1995), as applicable in any technical data.

Agilent Technologies
1400 Fountaingrove Parkway
Santa Rosa, CA 95403-1799

Contents

Welcome to Your System Information Guide	5
Introduction	7
Specifications and Hardware Information	11
Calibration Cycle	11
General System Software Functionality	12
Data Export	12
Alarms and Alerts	16
Link Editor	19
Real-time Mapping (Option 160)	19
Report Generation	20
Virtual Front Panel Printing	21
Indoor Measurements (Option 180)	21
Agilent E7475A Software Specifications	23
Software Measurement Specifications	23
GSM Broadcast Channel Analysis	23
GSM Interference Analysis	25
CW Power Measurements	27
Channel Power Measurements	28
Spectrum Measurements	29
GSM Power Measurements	31
GSM Phone functionality	31
GSM Phone Call Control	32
GSM Phone Measurement Data	34
GSM Phone Messaging	35
GSM Phone Scan Measurements	36
General Hardware Specifications	39
Personal Computer Recommendations, Minimum	39
External GPS Receiver Requirements	40
GPS and Vehicle Fitted Navigation Systems Supported	40
Differential GPS Receiver Requirements	40
Antennas	40

Agilent E7475A Hardware Specifications	41
Supported Phones	45
Agilent E7475A System Options	47
Software License Options	48
Receiver Options	50
Phone Options	53
Power Localization Options	54
Agilent 86154A, 86153A, and N3419A System Accessories	55
General System Accessories	55
86153A Retrofit Option	62
Agilent N3419A vehicle-mounted display system	62
Power Localization Options	64
Part Number Summary	65
RF Connectors and Antennas	69

Welcome to Your System Information Guide

Thank you for choosing Agilent Technologies. In this Guide, you'll find the necessary information needed to support your drive test system.

For Information on...	See This
Overview of the Agilent Wireless Solutions System	"Introduction" on page 7
Software Specifications	"Agilent E7475A Software Specifications" on page 23
Hardware Specifications	"General Hardware Specifications" on page 39
E7475A System Options	"Agilent E7475A System Options" on page 47
System Accessories	"Agilent 86154A, 86153A System Accessories" on page 57
System Part Number Summary	"Part Number Summary" on page 65

If You Need Help...

To Do This...	See This
View and Print this Guide	Additional Documentation, Chapter 3, <i>Getting Started Guide</i>
Contact Agilent Technologies and the Product Web site	http://www.agilent.com/find/networks

Introduction

The E74xx drive test system is a scalable integrated air interface measurement system, used to obtain comprehensive RF measurement and call performance data versus location. Depending on the hardware options you have purchased, you will be able to make measurements on the following technology types:

- CDMA Cellular and PCS band
- TDMA Cellular and PCS band
- GSM900, DCS1800, GSM1900, or GSM900/DCS1800 Dual-band
- W-CDMA (UMTS) (currently not supporting phone measurements), or cdma2000

Receiver-based, phone-based, or combined measurement capabilities are selected via stackable software licenses that reside on a supplied software protection key. Measurement receivers, which can be supplied with or without an internal GPS receiver, are supplied with magnetic mounting antennas, car mounting brackets, and RS-232 connection cables to link to a laptop PC (available as an accessory). Phone software licenses are supplied with dual-port ruggedized PCMCIA serial I/O cards.

The E74xx drive test system is a scalable measurement system for wireless optimization. It has four basic configurations:

- Phone-based measurement system using a single or multiple test mobile phones
- Receiver-based measurement system using a single or multiple digital measurement receivers
- Combined phone and receiver measurement system using a single or multiple receivers and phones
- Basestation Over Air Testing (Model E7490A, CDMA only)

Introduction

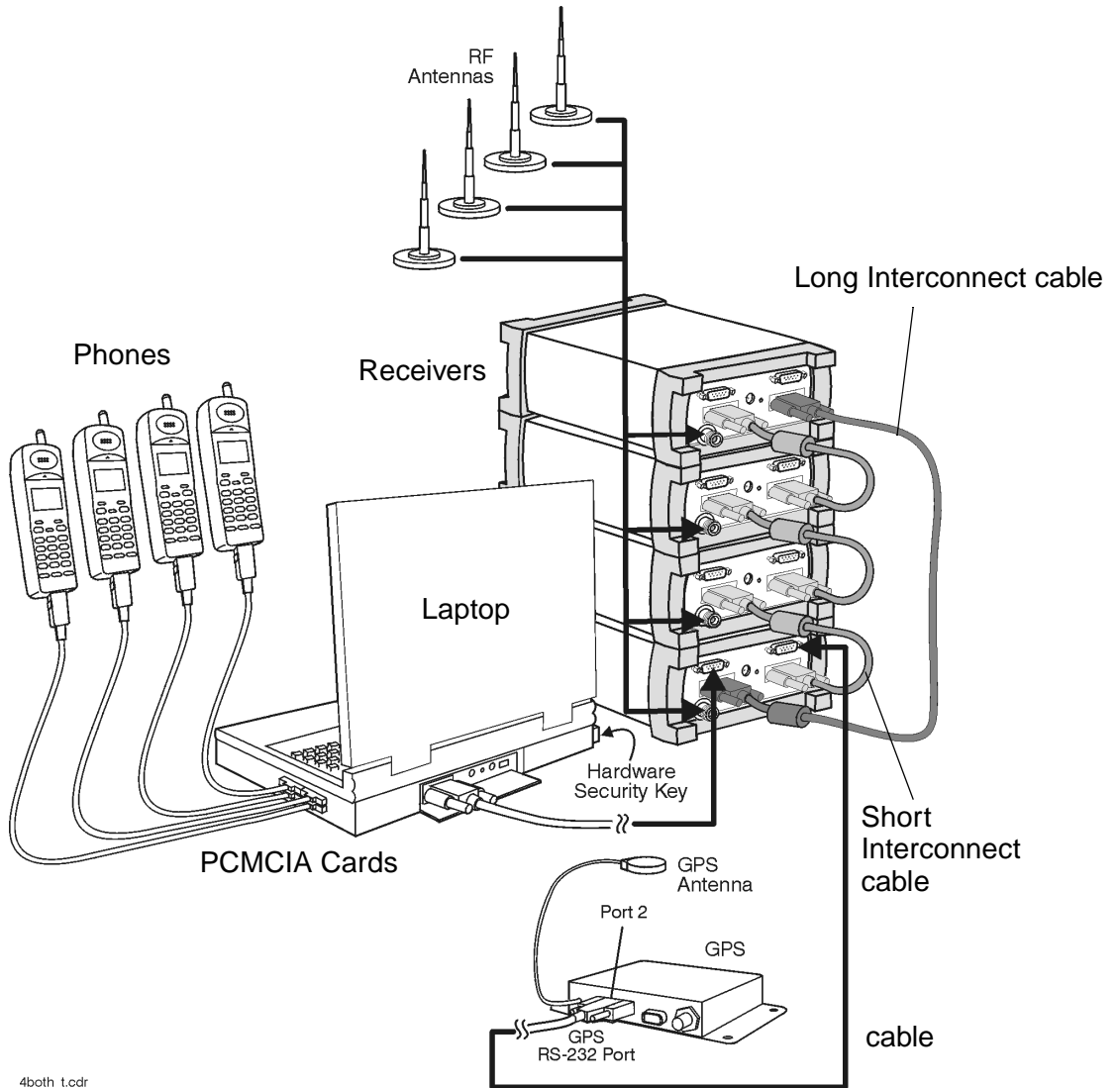
All of the above configurations can be used for indoor measurement. Measurements are matched to an imported floor plan or map in the absence of GPS.

The system requires a PC with Windows 95/98 or NT 4.0 (or later) running the receiver and/or phone-based measurement software. A navigation system, such as a GPS receiver and GPS antenna, is required to obtain longitude and latitude information for logging the position at which the measurements are taken by the receiver or the phone. This type of measurement can also be accomplished by use of the indoor option in lieu of the GPS option. The GPS receiver may be integrated into the digital receiver or it may be an external device. A suitable laptop PC and external GPS receiver can be supplied as drive test accessory products. The complete system is transportable in a lightweight briefcase that can be supplied as an accessory product.

[Figure 1 on page 9](#) illustrates a four phone and four receiver system.

Introduction

Figure 1 Four phone and four receiver system



4both_t.cdr

Specifications and Hardware Information

This section lists specifications and characteristics of the systems.

Specifications	Describes warranted performance over the temperature range 0°C to +55°C (unless otherwise noted) after the temperature of the Receiver has been stabilized by 30 minutes of continuous operation.
Typical	Provides useful information by giving non-warranted performance parameters. Typical refers to test data at the fiftieth percentile for a 25°C room temperature.
Characteristics	Provides useful information by giving non-warranted performance parameters. Characteristics describe product information for parameters that are either not subject to variation, non-measurable, verifiable through functional pass/fail tests, or as a matter of routine, not measured. <i>Characteristics are printed in italics.</i>

Calibration Cycle

Agilent Technologies warrants instrument specifications over the recommended calibration interval. To maintain specifications, periodic recalibrations are necessary. We recommend that the Receiver be calibrated at an Agilent Technologies service facility every 12 months.

General System Software Functionality

Some of the functionality of the system is common across all wireless solutions. The following sections describe these cross-solution features.

- [“Data Export” on page 12](#)
- [“Alarms and Alerts” on page 16](#)
- [“Link Editor” on page 19](#)
- [“Real-time Mapping \(Option 160\)” on page 19](#)
- [“Report Generation” on page 20](#)
- [“Virtual Front Panel Printing” on page 21](#)
- [“Indoor Measurements \(Option 180\)” on page 21](#)

Data Export

All measurement data can be exported from the Agilent Wireless Solutions database for display and post-processing. Any measurement data can be exported. The export function provides flexible filtering capability enabling you to define the specific data to be exported. Multiple data types can be exported to a single output file.

You can save export plans, and once saved, those plans can be quickly accessed for easy data export. An export plan is made up of:

Export Plan Element	Description
Data type	Defines which data will be exported. Column order is user-definable.
Alarm	Defines which alarms will be exported.
Note	Exports any user note or auto-note entered while recording data

General System Software Functionality

Export Plan Element	Description
Processing functions	Defines the functions that will be applied to the data during export.
Exclusion rules	Defines a set of conditions that, if true, the associated data will be excluded from the export.
Geographic binning	Defines data-reduction process in which the data is averaged based on geographic area or distance

Several different operations can be executed in order to extract the desired data in the desired format.

Processing functions

- None
- Choose
- Count - counts number of values above or below a specified threshold
- Field
- Match
- Maximum
- Minimum
- Sort - ascend or descend
- Value(x)

Conditionals

- Greater than (>) a threshold
- Less than (<) a threshold
- All values

Geographic binning methods

- **Bin size**
User defines the size in meters of bin to be used.
- **Percentage of low and high values to discard**
User defines the percentage of values to ignore from new raw data before calculating the bin.

General System Software Functionality

- **Bin by location (grid binning)**

Define the reference bin and point of bin to be used, choices are:

- Center of bin
- Corner of bin

Each bin then has the following secondary choices:

- Southwest extent of drive data
 - ▲ Southeast extent of drive data
 - ▲ Northwest extent of drive data
 - ▲ Northeast extent of drive data
 - ▲ User-defined reference coordinates

- **Bin by distance travelled (linear binning)**

Data is averaged based on the distance traveled.

Data Output Formats

The output formats supported by the Agilent Wireless Solutions are listed below. The system is designed to work with MapInfo®¹ in an integrated manner via an OLE (object link embedded) link to the MapInfo application (MapInfo via COM). With “Run MapBasic” checked, this exports the data, launches MapInfo, creates the necessary MapInfo table, and creates a thematic map display in MapInfo. This functionality requires MapInfo be present.

- Arcview®² compatible file
- MapInfo via COM (optional - run MapBasic program after export)
- MapInfo compatible file
- Planet ®³ compatible file
- Text file

1. MapInfo® is a registered trademark of MapInfo Corp.
2. ArcView ® is a registered trademark of Environmental Systems Research Institute, Inc.
3. Planet ® is a registered trademark of Metapath.

Export Column Data Delimiters

- Tab
- Comma
- Space

Optional Data Parameters

- Position
- Altitude
- Time
- Date

Optional Settings

- Fill column data
- Column headings
- Sequence Number

Position Formats

- Decimal degrees with direction
- Deg: Min: Sec with direction
- Signed decimal degrees
- Signed Deg: Min: Sec
- UTM (Universal Transverse Mercator)

Coordinate Datums

It is possible to change the coordinate datum being applied by the application. It can be changed during the plan configuration.

The following datums are available:

- AGD66
- AGD84
- European
- Hu-Tzu-Shan
- NAD27 (default) (North American)

General System Software Functionality

- NAD83 (North American)
- OS36 (GB)
- SAD69 (Brazil)
- SAD69 (Mean)
- Tokyo (J6)
- Tokyo-Korea
- WGS72 (World Geodetic System)
- WGS84 (World Geodetic System)

Alarms and Alerts

The Wireless Solutions Software has sophisticated alarm and alert capabilities. An alarm is a boolean expression made up of one or more conditions on single or multiple measurements, including comparisons of measurement results. An alert is a simplified alarm, defined as a single condition on a single measurement. An action, or actions, can be executed when an alarm or alert occurs. The re-trigger feature re-executes an alarm's actions if all the conditions have continuously been satisfied for a specified amount of time (alarm actions are normally executed only when the conditions transition from unsatisfied to satisfied). If an alert or alarm condition occurs, while data is being logged, each data record includes the alert/alarm information.

Alarm Wizard

The alarm wizard can be used to simplify setting up some of the more common alarms.

Features of the Alarm Wizard Set up

- Specify type of alarm required
- Receive notification of new or changed measurements
- Receive notification of resources required
- Customize settings, actions and other user-definable aspects
- Set default Male and Female voice alarm messages

General System Software Functionality

Actions (Alarms and Alerts)

- Play a .WAV audio file
- Display a text message
- Pause recording, Continue (resume) recording, or Stop recording measurements

Alert Conditions

- Greater than ($>$)
- Greater than or equal to (\geq)
- Less than ($<$)
- Less than or equal to (\leq)
- Equal to ($=$)
- Not equal to (\neq)

Alert Operators

- Value
- Delta
- Maximum
- Minimum

Alarm Conditions

- Greater than ($>$)
- Greater than or equal to (\geq)
- Less than ($<$)
- Less than or equal to (\leq)
- Equal to ($=$)
- Not equal to (\neq)
- Is a subset
- Is not a subset
- Sets intersect
- Sets do not intersect
- Range (inclusive)
- Range (exclusive)

General System Software Functionality

Alarm Preprocess Operators

- Value
- Maximum
- Minimum
- Subset
- Average
- Count
- Delta
- dField (a change in field value)
- Field
- MaxField
- MinField
- Median

Alarm Condition Operators

- OR
- AND
- XOR (exclusive OR)

Any measurement can be an operand in an alert or alarm. Below are some examples of alerts and alarms.

- **Alerts**
 1. Minimum (CW Power Trace) > -90 dBm
 2. Maximum(Spectrum) < -100 dBm
- **Alarms**
 3. (Heading < 300) and (GPS FIX Type = GPS 3D)
 4. Subset (CW Power Trace) NOT Subset (value Channel Power List)

System status parameters can also be used as operands in alerts and alarms. For example, an alert can be set to trigger when the available disk space on the PC drops below 10 MB or when the GPS position fix is lost.

Link Editor

The Link Editor is available from the Tools menu and enables you to link controls in one virtual front panel (the source) with parameters in another virtual front panel (the destination). Links can be configured from either Configuration mode or Collection mode. You can:

- Link simple measurement results to parameters for other measurements.
- Link measurement parameters to parameters for other measurements.
- Invoke an action (such as a button click) on all virtual front panels of the same type.
- Invoke an action (such as a button click) on a select set of virtual front panels of the same type.

Real-time Mapping (Option 160)

Using the Positioning virtual front panel, you can display vector and raster-based maps against a real-time, plotted measurement result. The following features are available:

- Load and control map layers (TAB format).
- Add raster maps (GIF, TIF, and PNG format).
- Zoom in and Zoom out of map detail.
- Pan automatically and manually.
- Scale automatically and manually.
- Add labels and identify points.
- Display alarms or notes on map. Click on alarm or note symbol to display the message associated with the alarm or note.
- Link a measurement result, via the link editor for display on the map as a thematic value.

General System Software Functionality

- Map result values, in color, via the legend button. Pre-defined legends exist for most common measurement results.
- Specify base stations in StationInfo.txt to have them display on the map.
- Link the active server for a phone to the map and the program will draw a vector line from the current position to the appropriate base station.

Report Generation

The report generator is accessed using the **Tools > New Report (Ctrl+R)** menu option, or by clicking the report generator button in Collection mode. The reports generated are in HTML format with referenced images, which are captured in PNG format. The reports and images are stored in the report folder (if default installation was used:

C:\Program Files\Agilent Technologies\E74xx\Reports\reportname\). The following details can be entered by the user:

- Title (also used for the report folder name)
- User name
- Company name
- Time report generated. By default, this is the PC system time.
- Date. By default, this is the PC system date.
- Location. By default, these are the GPS coordinates identified at the time the report was generated.
- Comments. This is optional text, entered by the user.
- A report can include all opened Virtual Front Panels, or just those minimized.
- A report may also contain textual and/or table information for specific measurements.

General System Software Functionality

Once the report has been generated, it is displayed on the screen, using your default browser. Reports can be viewed by selecting the Reports tab while in Configuration mode. Reports can be imported and exported.

Virtual Front Panel Printing

It is possible to print virtual front panels. This feature is accessed from the File menu. There are two print commands:

- Print (Ctrl+P) prints the application main window and all other virtual front panels.
- Print VFP prints just the active virtual front panel.

The active virtual front panel is the window with the blue title bar (if default windows colors are used).

Indoor Measurements (Option 180)

The Agilent Wireless Solutions Software can be used for testing and measuring indoor coverage areas. These measurements are taken without reference to GPS or dead-reckoning position information.

An indoor system supports the following hardware:

- Phones
- Receivers (no PN correlation for CDMA)
- Pen tablet computer
- Computer pen input devices
- Full set of backpack accessories
- Portable power supply for computer and receiver

The measurement control virtual front panel has the following features

- Selection of data points, such as user features like CW sources

General System Software Functionality

- Waypoint information to specify distribution of data between two waypoints.
- Automatic interpolation of data between waypoints, during recording
- Imported maps converted to layer map files. Supports GIF, TIF, and PNG formats
- Zoom in and zoom out of map area.
- Automatic and manual pan.
- Automatic and manual scaling.
- Display alarms and notes on map. Click on alarm or note symbol to display the message associated with the alarm or note.
- Link measurements to display thematic values.
- Map result values in color via the legend button. Pre-defined legends exist for most common measurement results.

Agilent E7475A Software Specifications

Software Measurement Specifications

The Agilent E7475A measurement software has the following measurement capabilities and functionality:

- [“GSM Broadcast Channel Analysis” on page 23](#)
- [“GSM Interference Analysis” on page 25](#)
- [“CW Power Measurements” on page 27](#)
- [“Channel Power Measurements” on page 28](#)
- [“Spectrum Measurements” on page 29](#)
- [“GSM Phone Call Control” on page 32](#)
- [“GSM Phone Measurement Data” on page 34](#)
- [“GSM Phone Messaging” on page 35](#)
- [“GSM Phone Scan Measurements” on page 36](#)

GSM Broadcast Channel Analysis

Part of Agilent E7475A Option 110, 120.

The Agilent E7475A system is capable of collecting comprehensive RF measurement data. These measurements are independent of network parameter settings. The systems execute three different types of broadcast channel measurements (listed below). Any or all of them can be executed simultaneously.

Measurement Types

- **All BCH** The system measures the power of all GSM channels in the user selected range. The results are displayed as a trace with one point for each channel. If 20 or less channels are

Agilent E7475A Software Specifications

- found in the range, they are displayed as a bar graph with amplitude versus frequency.
- **Top N** The system measures all of the GSM channels in the user selected range and returns the N strongest GSM channels received. N is a user-defined integer from 1 to 20. The results are displayed in a bar graph of amplitude versus frequency or a line graph of amplitude versus time. If a measured channel is a broadcast channel, the BSIC can be decoded and a BER measurement can be returned¹.
- **User list:** Returns power measurements from a user-defined list of frequencies or channels. There can be up to 40 ARFCN defined in the list. The user inputs a list of up to 40 GSM channels to be measured. The measurements are displayed in a bar graph of amplitude versus frequency or a line graph of amplitude versus time. If a measured channel is a broadcast channel, the BSIC can be decoded. It is also possible to display the highest powers of the top N ARFCNs from this list. The user list frequencies can be imported from a text file. This allows regularly-used sets of channels to be stored for quick loading into the application.

Measurement Controls

- **Frequency Units**
 - Frequency
 - Channel
- **Measurement types**
 - All BCH
 - Top N
 - User list
 - Top N on User list

1. An estimated BER is calculated based on the number of the bit errors in the mid-amble of the synchronization burst.

Agilent E7475A Software Specifications

- ARFCN (Absolute Radio Frequency Channel Number)
 - Start ARFCN, start of range
 - Stop ARFCN, end of range

Display Controls

- Markers (Trace Displays only)
 - Multiple markers
 - Delta Markers
 - To Max function
 - Drag and drop
- Power Display (Y-axis parameter)
 - dBm
 - RxLev
- Display Mode
 - Amplitude versus Frequency
 - Amplitude versus Time
- Show Value (bar graphs only)
 - Power (dBm)
 - Power in RxLev
 - BSIC (if BSIC decode selected)
 - BER (if BSIC decode selected)
 - Name of cell site (if BSIC decode selected)

Measurement Results

- GSM Carrier Power
- BSIC
- BER

GSM Interference Analysis

Part of Agilent E7475A Option 110, 120.

The Agilent E7475A can make adjacent channel and co-channel interference measurements. The measurement returns the ratios of the power at the

Agilent E7475A Software Specifications

user-defined carrier frequencies and power of channels either adjacent or on the same channel.

Measurement types

- Adjacent Channel measurement:
The system can make adjacent channel interference measurements. For two, user-selectable channels, it can return the ratio in dB of the power in each channel to that in the immediately adjacent channels.
- Co-Channel measurement:
For a single-user, selectable channel, the system can return:
 - Total power in the channel
 - Carrier to interferer ratio
 - Fading
 - Bar graph of symbol delay spread (± 6 symbols).
 - Decoded BSIC of the primary signal in the channel.

Measurement Controls

- Frequency Units
 - Frequency
 - Channel
- Measurement types
 - Adjacent channel analysis
 - Co-channel analysis

Display Controls

- Show Value (bar graphs only)
 - Power in dBm

Measurement Results

- Adjacent carrier (A)
 - Ratio of power C/C+1 (dB)
 - Ratio of power C/C-1 (dB)
- Adjacent carrier (B)
 - Ratio of power C/C+1 (dB)
 - Ratio of power C/C-1 (dB)

Agilent E7475A Software Specifications

- Average power over 8 timeslots (default) - adjacent channel
- Peak power over 8 timeslots - adjacent channel
- Co-Channel
 - Total power received in channel (dBm)
 - Primary power of strongest signal path (dBm)
 - Peak deviation Fading from primary power (dB)
 - Ratio of primary power / interferer (dB)
 - Primary BSIC and cellsite name
 - Secondary BSIC and cellsite name
 - Status of measurement
- Symbol Delay Spread (multi-path) graph
 - Power at ± 6 symbol offsets

CW Power Measurements

Part of Agilent E7475A Option 110, 120.

The Agilent E7475A system can measure the peak power (CW Power) at user-defined frequencies within a user-defined resolution bandwidth. The user can define the frequencies to be measured in two different ways.

Frequency Entry Methods

- **List:** Enter an arbitrary list of frequencies. The user list frequencies can be imported from a text file. This allows regularly-used sets of frequencies or channels to be stored for quick loading into the application.
- **Trace:** Enter a start frequency, step size, and count. The system measures at the start frequency, at the (start + step) frequency, ..., (start + (count - 1*step) frequency. For example, if the start frequency is set to 900 MHz, the step size is set to 1 MHz, and the count is set to 4; the measurements are made at 900 MHz, 901 MHz, 902 MHz and 903 MHz. Frequencies can be specified in terms of frequency units or channel number.

Measurement Controls

- Frequency
 - Arbitrary list (List)

Agilent E7475A Software Specifications

- Start/Step/Count (Trace)
- IF Bandwidth
 - 1.25 MHz (wideband mode)
 - 200 kHz (narrowband mode)
- Resolution Bandwidth (CW Power only)
 - 8.36 kHz to 950 kHz in wideband mode
 - 1.68 kHz to 190 kHz in narrowband mode

Channel Power Measurements

Part of Agilent E7475A Option 110, 120.

The Agilent E7475A system can measure the total power (Channel Power) within a user-defined bandwidth at a user-defined set of frequencies. This differs from the CW power measurement in that the total power is integrated across the specified channel width. The user can define frequencies to be measured in two different ways.

Frequency Entry Methods

- **List** Enter an arbitrary list of frequencies. The user list frequencies can be imported from a text file. This allows regularly used sets of frequencies or channels to be stored for quick loading into the application.
- **Trace** The spectrum virtual front panel can be used to quickly diagnose RF problems. The system operates in both the downlink and uplink GSM bands. Enter a start frequency, step, size and count. The system measures at the start frequency, at the (start + step) frequency, ..., (start + (count - 1)*step) frequency. For example, if the start frequency is set to 900 MHz, the step size is set to 1 MHz, and the count is set to 4; the measurements are made at 900 MHz, 901 MHz, 902 MHz and 903 MHz.

Frequencies can be specified in terms of frequency units or channel number.

Measurement Controls

- Frequency
 - Arbitrary list (List)
 - Start/Step/Count (Trace)
- IF Bandwidth
 - 1.25 MHz (wideband mode)
 - 200 kHz (narrowband mode)
- Channel Width (Channel Power only)
 - GSM900 (option 300, 305, 310)
 - ▲ 30 kHz to 35 MHz in wideband mode
 - ▲ 5 kHz to 35 MHz in narrowband mode
 - DCS1800 (option 320, 330)
 - ▲ 30 kHz to 75 MHz in wideband mode
 - ▲ 5 kHz to 75 MHz in narrowband mode
 - GSM1900 (option 340, 350)
 - ▲ 30 kHz to 60 MHz in wideband mode
 - ▲ 5 kHz to 60 MHz in narrowband mode

Spectrum Measurements

Part of Agilent E7475A Option 110, 120.

The spectrum virtual front panel can be used to quickly diagnose RF problems. The spectrum display provides the controls listed below. Frequencies can be specified in terms of frequency units or channel number.

Measurement Controls

- Frequency, tunable range¹
1. Spectrum measurement allows some out of band tuning above and below specified frequency ranges. These extended ranges are shown in brackets - []. The performance is not specified in these ranges. Characteristic noise floor increase is 2 dB with respect to specified range. Characteristic amplitude accuracy is unchanged with respect to specified range.

Agilent E7475A Software Specifications

- GSM900 (option 300, 310)
 - ▲ 880 - 915 MHz [876 - 917 MHz]
 - ▲ 925 - 960 MHz [921 - 962 MHz]
- GSM-R (option 305)
 - ▲ 876 - 915 MHz [876 - 917 MHz]
 - ▲ 921 - 960 MHz [921 - 962 MHz]
- DCS1800 (option 320, 330)
 - ▲ 1710 - 1785 MHz [1705 - 1790 MHz]
 - ▲ 1805 - 1880 MHz [1800 - 1885 MHz]
- GSM1900 (option 340, 350)
 - ▲ 1850 - 1910 MHz [1845 - 1915 MHz]
 - ▲ 1930 - 1990 MHz [1925 - 1995 MHz]
- Frequency, maximum span
 - GSM900 (option 300, 310) - 41 MHz
 - GSM-R (option 305) - 41 MHz
 - DCS1800 (option 320, 330) - 85 MHz
 - GSM1900 (option 340, 350) - 70 MHz
- IF Bandwidth
 - 1.25 MHz (wideband mode)
 - 200 kHz (narrowband mode)
- Resolution Bandwidth
 - 8.36 kHz to 950 kHz in wideband mode
 - 1.68 kHz to 190 kHz in narrowband mode

Markers

- Multiple markers
- Delta Markers
- To Max function
- Drag and drop

Spectrum noise floor

- Narrowband mode, 300 kHz span
 - -139 dBm average
 - -138 dBm peak
- Wideband mode, 300 kHz span

Agilent E7475A Software Specifications

- -131 dBm average
- -130 dBm peak
- Narrowband mode, 25 MHz span
 - -130 dBm average
 - -129 dBm peak
- Wideband mode, 25 MHz span
 - -125 dBm average
 - -123 dBm peak

GSM Power Measurements

The Agilent E7475A system is capable of measuring power using various methods. The following list describes how the techniques are used, calculated, and displayed.

- Spectrum and CW analyzer
 - Peak power measurement.
- Channel analyzer
 - Total channel power.
- Broadcast channel and adjacent channel analyzer
 - Power averaged over 8 timeslots.
 - Peak power measurement.
- Broadcast channel with BSIC decoding
 - Power is measured over 1 timeslot.
- Co-channel analyzer
 - Power of the dominant component over 1 timeslot.
- Adjacent Channel Analyzer
 - Power averaged over 8 timeslots.
 - Maximum (Peak) power over 8 timeslots.

GSM Phone functionality

Part of Agilent E7475A Option 100, 120, 150.

Agilent E7475A Software Specifications

The phone component of the Agilent E7475A system includes four main functions.

- Phone Call Control (see [page 32](#))
- Phone Measurement data (see [page 34](#))
- Phone Messaging display (see [page 35](#))
- Phone Scan Measurement data (see [page 36](#))

GSM Phone Call Control

This functionality provides automated control of the handset from the PC. The phone control virtual front panel provides the control functions listed below.

Call controls

- Call initiation mode
 - Sequence
 - Single (long) call
 - Termination
- Call initiation control
 - Start/continue
 - Pause
 - Stop
- Automatic call sequencing
 - Access time (duration of call)
 - Redial wait (duration between calls)
 - Total calls (number of calls to be executed)
- Automatic redial
 - On a dropped call
 - On a blocked call (failed origination)
 - Redial interval (wait duration after drop or block)
 - Maximum redial attempts
- Phone number pick list
- Call option
 - Full rate of speech
 - Enhanced full rate of speech (if supported by network)

Agilent E7475A Software Specifications

- Select channel
 - Force handover to an ARFCN
 - Prevent handover from an ARFCN
 - Force broadcast channel (BCH)
- Mobile behavior
 - Restrict timeslot to be used by the mobile (0-7)
 - Ignore cell barring

Statistics logging controls

- Attempted calls
- Dropped calls
- Blocked calls (failed originations)
- Handover data

In addition to control functionality, the phone control virtual front panel displays the information listed below.

Display fields (text)

- Call information
 - Access time counter
 - Redial time counter
 - Calls remaining
- Statistics
 - Dropped call rate
 - Blocked call rate
 - Total attempts
 - Total drops
 - Total blocks
- Handover Information
 - Successful handovers
 - Failed handovers
 - Attempted handovers
- Serving cell ARFCN

GSM Phone Measurement Data

The Agilent E7475A system extracts various measurement data from the mobile handset. You control extraction of the specific measurement types with a set of check boxes. The data types are listed below.

Display fields (text)

- State (No service, idle or dedicated)
- Serving cell information
 - BCH
 - BSIC (base station identity code)
 - Cell identity
 - Cell name
 - LAC (Location area code)
 - MNC (mobile network code)
 - MCC (mobile country code)
- Mobile measurement information
 - TCH (traffic) ARFCN
 - RxLev (full or sub)
 - RxQual (full or sub)
 - Mobile transmit power
 - Timing advance
 - Timeslot
 - Radio link timeout counter (RLTC)
 - Frame erasure rate (FER)

Tabular displays

- Frequency hopping sequence
- Neighbor cell list
- C1 and C2 path loss and re-selection parameters (not for Sagem OT-35G/D phones)

Graph displays

- Serving cell and neighbor cells amplitude versus frequency
- Serving cell and neighbor cells amplitude versus time

- Mobile measurements
 - RxQual versus time (displayed as RxQual-sub or RxQual-full)
 - RxLev versus time (Can be displayed as RxLev-sub or RxLev-full.)
 - Tx power versus time
 - Timing advance versus time

GSM Phone Messaging

The Agilent E7475A system extracts and decodes the Layer 3 and Layer 2 over-the-air messaging from the handset. The user can select any or all of the channel types listed below from which to extract and decode messaging.

Message type selection controls

- Layer 3 messages
 - Call control
 - Radio resource
 - Mobility management
- Layer 2 messages
 - Sub-set of Layer 2 messages¹.

In the messaging display, the user can double-click on any message to expand it to the next level of detail. A snapshot function captures the last 50 messages to a separate display while the main display continues to update.

Message logging controls

- Log to display
- Layer 2 messages
- Layer 3 messages
- Snapshot

1. The Layer 2 protocol decodes are dependent on the test mobile phone hardware used. Currently the Sagem OT35x, OT55x and OT75x provide only the Information (I) messages and the SABM messages. The Sagem OT95x and the Orbitel 907 test mobiles provide the full Layer 2 commands covered in GSM 04.06 version 5.2.1 table 4.

GSM Phone Scan Measurements

Part of Agilent E7475A Option 130.

The Agilent E7475A system enables the phone to switch into a scanning mode and to pass these measurements for display and recording. The mobile scans all broadcast channels¹.

Measurement Types

- All BCH The system will scan through and measure the power in all the frequency channels in its operating range. The results are displayed as a trace with one point for each of the channels.
- Top N The system will scan through and measure the power in all the frequency channels in its operating range. The Top N channels, where N is an integer between 1 and 20, are then displayed in either a bar graph of amplitude versus frequency or a line graph of amplitude versus time.
- User list The user inputs a list of up to 20 GSM channels to be measured. The results are displayed in a bar graph of amplitude versus frequency or a line graph of amplitude versus time.

Measurement Controls

- Frequency units
 - Frequency
 - Channel
- Measurement types
 - All BCH
 - Top N
 - User list

Markers (Trace Displays only)

- Multiple markers

1. When a test mobile is being used as a frequency scanner, it cannot be used to set up calls and log other data at the same time.

Agilent E7475A Software Specifications

- Delta markers
- To Max function
- Drag and drop

Display Controls

- Power display (Y-axis parameter)
 - dBm
 - RxLev
- Display mode
 - Amplitude versus frequency
 - Amplitude versus Time
- Show value (bar graphs only)
 - Power (dBm)
 - Power in RxLev

Measurement Results

- GSM carrier power

General Hardware Specifications

Personal Computer Recommendations, Minimum

The PC requirements differ depending on the operating system, and on whether you wish to collect data from a single phone or multiple phones.

Single phone

- Windows 95/98
 - Minimum: 233 MHz Pentium, 64 Mbytes RAM
 - Recommended: 266 MHz Pentium II or III, 64 Mbytes RAM
- Windows NT/2000
 - Minimum: 233 MHz Pentium, 64 Mbytes RAM
 - Recommended: 266 MHz Pentium II or III, 128 Mbytes RAM

Multiple phone

- Windows 95/98
 - Minimum: 266 MHz Pentium, 64 Mbytes RAM
 - Recommended: 366 MHz Pentium II or III, 64 Mbytes RAM
- Windows NT/2000
 - Minimum: 266 MHz Pentium, 64 Mbytes RAM
 - Recommended: 366 MHz Pentium II or III, 128 Mbytes RAM

Common Requirements

- RS-232 DB9 Serial Port
- Parallel port: 25-pin bidirectional
- 90 Mbytes disk space for software installation
- 200 Mbytes disk space for data (recommended)
- CD-ROM drive recommended
- 800 x 600 display resolution minimum

General Hardware Specifications

- For multiple phone capability
 - Two PCMCIA slots
 - USB port with USB/serial hub (recommended)

External GPS Receiver Requirements¹

- TSIP, TAIP, or NMEA communication protocol
- RS-232 (DB9) interface

GPS and Vehicle Fitted Navigation Systems Supported

- Bosch Travel Pilot RGS08 Professional
- Magneti Marelli RP Nav200
- GARMIN GPSII/III/IIIplus
- Trimble DR
- Trimble 455/DR and 450
- Trimble SVeeSix
- Trimble 400

Differential GPS Receiver Requirements

- DCI RDS-3000

Antennas

- Receiver RF input specifications:
 - Input impedance: 50Ω
 - Connector type: Type-N

1. For Agilent E7473A CDMA options 110, 111, or 120 and Agilent E7490A option 111, or Agilent E7476A option 110, any external GPS will have to output a GPS 1 pulse/second signal for improved frequency accuracy.

Agilent E7475A Hardware Specifications

For full details on receiver types and options, refer to the appropriate system options section in this guide.

Agilent E7475A Options 300, 310, 320, 330, 340, and 350 Receiver Specifications

Model		Agilent E7475A Option 300, 310 (E6451A)	Agilent E7475A Option 320, 330 (E6453A)	Agilent E7475A Option 340, 350 (E6454A)
Frequency	Frequency range	880 to 915 MHz 925 to 960 MHz	1710 to 1785 MHz 1805 to 1880 MHz	1850 to 1910 MHz 1930 to 1990 MHz
	Frequency accuracy	±1 ppm		
	IF bandwidth	1.25 MHz, characteristic (wideband mode) 200 kHz, characteristic (narrowband mode)		
	Aging of TCXO	±1 ppm/year		
Amplitude	Accuracy, 1.25 MHz IF bandwidth	± 0.5 typical (-25 dBm to -100 dBm)		
	Accuracy, 200 kHz IF bandwidth	± 0.5 typical (-25 dBm to -100 dBm)		
	Noise figure	8 dB typical		
	Maximum safe input level	+10 dBm, 20V DC, characteristic		
	1 dB compression point ^a	-15 dBm, characteristic		
	Adjacent channel desensitization ^b	-25 dBm typical		
	Adjacent channel rejection ^c Internally generated spurious, input referred	45 dB typical -120 dBm		
Input/Output	RF input	50Ω Type-N		

Agilent E7475A Hardware Specifications

Model		Agilent E7475A Option 300, 310 (E6451A)	Agilent E7475A Option 320, 330 (E6453A)	Agilent E7475A Option 340, 350 (E6454A)
Connectors	Computer	RS-232 (DB9) Male		
	GPS	RS-232 (DB9) Male		
	Power	DC power jack 100 mils, positive center		
Miscellaneous	Operating temperature range	0°C to 55°C		
	Maximum relative humidity	80% for temperatures up to 31°C, decreasing linearly to 50% relative humidity at 40°C		
	Storage temperature range	-40°C to +70°C		
	Dimensions	6 in x 3-5/8 in x 8 in 15.24 cm x 9.21 cm x 20.32 cm		
	Weight	2.1 kg (4.6 lbs)		
	Power (options 300, 320, 340)	9 to 34 V DC, 9W		
	Power (internal GPS, Option 310, 330, 350)	9 to 34 V DC, 10W		
	Transformer AC Power (supplied with receiver)	100 - 240 Volts AC 50 - 60 Hz		
Internal GPS ^d (Option 310, 330, 350)	GPS Receiver	8 Channel internal GPS receiver		
	Connector type	SMA		
	Differential compatible without dead reckoning			

- It is recommended the input signal level not exceed -25 dBm.
- Adjacent channel desensitization applies to the wideband mode (1.25 MHz IF Filter) and is defined as: 1 dB compression of tuned signal with interfering signal ± 1.25 MHz from tuned signal.
- Adjacent channel rejection applies to the narrowband mode (200 kHz IF filter) and is defined as: Suppression of interfering signal ± 200 kHz from tuned signal.
- Systems fitted with an internal GPS do not support connection to external GPS receivers.

Agilent E7475A Hardware Specifications

Agilent E7475A Options 305 Receiver Specifications

Model		Agilent E7475A Option 305 (E6451A-E03)
Frequency	Frequency range	876 to 915 MHz 921 to 960 MHz
	Frequency accuracy	±1 ppm
	IF bandwidth	1.25 MHz, characteristic (wideband mode) 200 kHz, characteristic (narrowband mode)
	Aging of TCXO	±1 ppm/year
	Amplitude	880 to 915 MHz and 925 to 960 MHz range:
	Accuracy, 1.25 MHz IF bandwidth	± 0.5 dB typical (-25 dBm to -100 dBm)
	Accuracy, 200 kHz IF bandwidth	± 0.5 dB typical (-25 dBm to -100 dBm)
	Noise figure	8 dB typical
	876 to 880 MHz and 921 to 925 MHz range:	
	Accuracy, 1.25 MHz IF bandwidth	± 1 dB typical (-25 dBm to -100 dBm)
	Accuracy, 200 kHz IF bandwidth	± 1 dB typical (-25 dBm to -100 dBm)
	Noise figure	11 dB typical
	Maximum safe input level	+10 dBm, 20V DC, characteristic
	1 dB compression point ^a	-15 dBm, characteristic
	Adjacent channel desensitization ^b	-25 dBm typical
	Adjacent channel rejection ^c	45 dB typical
	Internally generated spurious, input referred	-120 dBm

Agilent E7475A Hardware Specifications

Model	Agilent E7475A Option 305 (E6451A-E03)	
Input/Output	RF input	50Ω Type-N
Connectors	Computer	RS-232 (DB9) Male
	GPS	RS-232 (DB9) Male
	Power	DC power jack 100 mils, positive center
Miscellaneous	Operating temperature range	0°C to 55°C
	Maximum relative humidity	80% for temperatures up to 31°C, decreasing linearly to 50% relative humidity at 40°C
	Storage temperature range	-40°C to +70°C
	Dimensions	6 in x 3-5/8 in x 8 in 15.24 cm x 9.21 cm x 20.32 cm
	Weight	2.1 kg (4.6 lbs)
	Power (option 305)	9 to 34 V DC, 9W
Internal GPS (Option 305)	Not supplied	

- a. It is recommended the input signal level not exceed -25 dBm.
- b. Adjacent channel desensitization applies to the wideband mode (1.25 MHz IF Filter) and is defined as: 1 dB compression of tuned signal with interfering signal ± 1.25 MHz from tuned signal.
- c. Adjacent channel rejection applies to the narrowband mode (200 kHz IF filter) and is defined as: Suppression of interfering signal ± 200 kHz from tuned signal.

Supported Phones

- Sagem OT-35G GSM900
- Sagem OT-35D DCS1800
- Sagem OT-55G GSM900
- Sagem OT-55D DCS1800
- Sagem OT-55P GSM1900
- Sagem OT-75M Dual Band
- Orbitel ST-907

Agilent E7475A System Options

For details on how to set up and configure your system, refer to the *Getting Started Guide* shipped with your system. Contact your local Agilent sales and service office for information about ordering these options.

Option	Description	More Details On Page
100	GSM Phone software license	page 48
110	GSM Receiver software license	page 48
120	GSM Receiver and Phone software license	page 48
130	GSM Scan Test Mobile software license	page 48
150	GSM Multiple Phone software license	page 49
160	Real-Time Mapping software license	page 49
180	Indoor Measurement software license	page 49
300	GSM 900 Digital Receiver (880-915 MHz and 925-960 MHz)	page 50
305	GSM-R Digital Receiver (876-915 MHz and 921-960 MHz)	page 50
310	GSM 900 Digital Receiver (880-915 MHz and 925-960 MHz) with internal GPS	page 51
320	DCS 1800 Digital Receiver (1710-1785 MHz and 1805-1880 MHz)	page 51
330	DCS 1800 Digital Receiver (1710-1785 MHz and 1805-1880 MHz) with internal GPS	page 52
340	GSM 1900 Digital Receiver (1850-1910 MHz and 1930-1990 MHz)	page 52
350	GSM 1900 Digital Receiver (1850-1910 MHz and 1930-1990 MHz) with internal GPS	page 53
500	GSM 900 Sagem Test Mobile Phone	page 53
510	DCS 1800 Sagem Test Mobile Phone	page 53

Agilent E7475A System Options

Option	Description	More Details On Page
520	GSM 1900 Sagem Test Mobile Phone	page 53
530	GSM 900/DCS 1800 Dual Band Sagem Test Mobile Phone	page 53
A1X to ARS	Country Specific Power Localization	page 54

Software License Options

Option	Part Number	Description
100		<ul style="list-style-type: none"> • GSM Phone software license • Software CD • Software License security key • Dual port PCMCIA serial I/O card
	E7474-90035	<ul style="list-style-type: none"> • Getting Started Guide
	E7475-90011	<ul style="list-style-type: none"> • E7475A GSM System Information Guide
110		<ul style="list-style-type: none"> • GSM Receiver software license • Software CD • Software License security key
	E7474-90035	<ul style="list-style-type: none"> • Getting Started Guide
	E7475-90011	<ul style="list-style-type: none"> • E7475A GSM System Information Guide
120		<ul style="list-style-type: none"> • GSM Receiver and Phone software license • Software CD • Software License security key • Dual port PCMCIA serial I/O card
	E7474-90035	<ul style="list-style-type: none"> • Getting Started Guide
	E7475-90011	<ul style="list-style-type: none"> • E7475A GSM System InformationGuide
130		<ul style="list-style-type: none"> • GSM Scan Test Mobile software license • Software CD • Software License security key

Agilent E7475A System Options

Option	Part Number	Description
150 ^a		<ul style="list-style-type: none"> • GSM Multiple Phone software license • Software License security key • Dual port PCMCIA serial I/O card
160		<ul style="list-style-type: none"> • Real-Time Mapping software license • Software CD • Software License security key
180 ^b		<ul style="list-style-type: none"> • Indoor Measurement software license • Software CD • Software License security key
	E7474-90038	<ul style="list-style-type: none"> • Indoor Getting Started Guide
	E7475-90011	<ul style="list-style-type: none"> • E7475A GSM System Information Guide

- a. Option 150 may be purchased as an upgrade software license with options 100 or 120, or it may be purchased separately. For more information on transferring licenses between security keys, refer to the License Manager online help.
- b. Enables indoor measurement correlation to an imported floorplan/map in the absence of GPS. Indoor option must operate with other, 100-series, measurement software options in order to collect and record measurement data. Supports *.tab, *.gif, *.tif formats for floorplan import.

Agilent E7475A System Options

Receiver Options

Option	Part Number	Description
300		GSM 900 Digital (E6451A) Receiver (880-915 MHz and 925-960 MHz)
	0950-2679	AC/DC Power supply for receiver
	5182-4794	Receiver RS-232 9-pin to 9-pin cable
	E6450-60007	Firmware Write Enable Key
	E6450-60010	Cigarette Lighter Power Adapter
	E7450-60001	15-pin Interconnection Cable 380mm (15in) (short)
	E7475-60006	Magnetic Mount GSM 900 RF Antenna
86154-60033	Vehicle Mounting Kit	
305		GSM-R Digital (E6451A H03) Receiver (876-915 MHz and 921-960 MHz)
	0950-2679	AC/DC Power supply for receiver
	5182-4794	Receiver RS-232 9-pin to 9-pin cable
	E6450-60007	Firmware Write Enable Key
	E6450-60010	Cigarette Lighter Power Adapter
	E7450-60001	15-pin Interconnection Cable 380mm (15in) (short)
	E7471-60009	Magnetic Mount GSM 900 RF Antenna
86154-60033	Vehicle Mounting Kit	

Agilent E7475A System Options

Option	Part Number	Description
310		GSM 900 Digital (E6451A) Receiver (880-915 MHz and 925-960 MHz)
	0950-2679	AC/DC Power Supply for receiver
	1150-2085	Magnetic Mount GPS Antenna for internal GPS
	5182-4794	Receiver RS-232 9-pin to 9-pin cable
	E6450-60007	Firmware Write Enable Key
	E6450-60010	Cigarette Lighter Power Adapter
	E7450-60001	15-pin Interconnection Cable 380mm (15in) (short)
	86154-60033	Vehicle Mounting Kit
	E7471-60009	Magnetic Mount GSM 900 RF Antenna
320		DCS 1800 Digital (E6453A) Receiver (1710-1785 MHz and 1805-1880 MHz)
	0950-2679	AC/DC Power Supply for receiver
	5182-4794	Receiver RS-232 9-pin to 9-pin cable
	E6450-60007	Firmware Write Enable Key
	E6450-60010	Cigarette Lighter Power Adapter
	E7450-60001	15-pin Interconnection Cable 380mm (15in) (short)
	86154-60033	Vehicle Mounting Kit
		E7475-60006

Agilent E7475A System Options

Option	Part Number	Description
330		DCS 1800 Digital (E6453A) Receiver (1710 -1785 MHz and 1805 - 1880 MHz)with Internal GPS
	0950-2679	AC/DC Power Supply for receiver
	1150-2085	Magnetic Mount GPS Antenna for internal GPS
	5182-4794	Receiver RS-232 9-pin to 9-pin cable
	E6450-60007	Firmware Write Enable Key
	E6450-60010	Cigarette Lighter Power Adapter
	E7450-60001	15-pin Interconnection Cable 380mm (15in) (short)
	86154-60033	Vehicle Mounting Kit
E7475-60006	Magnetic Mount DCS 1800 RF Antenna	
340		GSM 1900 Digital (E6454A) Receiver (1850-1910 MHz and 1930- 1990 MHz)
	0950-2679	AC /DC Power supply for receiver
	5182-4794	Receiver RS-232 9-pin to 9-pin cable
	E6450-60007	Firmware Write Enable Key
	E6450-60010	Cigarette Lighter Power Adapter
	E7450-60001	15-pin Interconnection Cable 380mm (15in) (short)
	86154-60033	Vehicle Mounting Kit
	E7475-60007	Magnetic Mount GSM 1900 RF Antenna

Agilent E7475A System Options

Option	Part Number	Description
350		GSM 1900 Digital (E6454A) Receiver (1850-1910 MHz and 1930-1990 MHz) with internal GPS
	0950-2679	AC /DC Power supply for receiver
	1150-2085	Magnetic Mount GPS Antenna for Internal GPS
	5182-4794	Receiver RS-232 9-pin to 9-pin cable
	E6450-60007	Firmware Write Enable Key
	E6450-60010	Cigarette Lighter Power Adapter
	E7450-60001	15-pin Interconnection Cable 380mm (15in) (short)
	86154-60033	Vehicle Mounting Kit
	E7475-60007	Magnetic Mount GSM 1900 RF Antenna

Phone Options

All phone options include a standard and extended battery, interface cable¹, and an AC/DC charger..

Option	Description	
500	GSM 900 Sagem test mobile phone	Sagem OT-55G
510	DCS 1800 Sagem test mobile phone	Sagem OT-55D
520	GSM 1900 Sagem test mobile phone	Sagem OT-55P
530	GSM 900/DCS 1800 Dual Band Sagem test mobile phone	Sagem OT-75M

1. Standard interface data cable - E7471-62005, Power interface data cable - E7475-62010

Power Localization Options

In order that the correct power supplies and mains cables are supplied with your system, it is necessary to have the correct power localization. The localization options listed below only change the power cord and charger types supplied. They do not affect the software or manual language, which is U.S. English.

Option	Description	
ARM	Argentina - English	
ARS	Asia Pacific (UK Cord) / English	
ABG	Australia - English	
A1X	Chile - English	
AKM	China - English	
ACE	Denmark - English	
ABB	Europe - English	
AKJ	Israel - English	
ACQ	S. Africa - English	
ACD	Switzerland - English	
AKL	Thailand	
ABA	U.S. - English	
ABU	United Kingdom - English	

Agilent 86154A, 86153A, and N3419A System Accessories

The following options are offered by Agilent Technologies. By following the general setup and specifications, you can build your own system according to your needs, based on the standard system. The system can be integrated with a GPS receiver and mapping software. The digital receiver is not intended for stand-alone usage and does not function unless properly connected to one of the Agilent Wireless Solutions Systems.

NOTE

To order any of the following options and accessories, specify model number 86154A and the option number, unless otherwise stated

General System Accessories

Agilent Order Number	Option	Description	More Details On Page
N3419A		Agilent N3419A vehicle-mounted display system	page 62
86153A		Retrofit internal GPS to Digital Receiver	page 62
86154A	010	Laptop PC Omnibook 4150 series model	page 58
86154A	020	Extra dual port ruggedized PCMCIA serial I/O card	page 58
86154A	030	Fujitsu Pen Tablet PC	page 59
86154A	032	Standard Pen Tablet PC Accessories	page 59
86154A	034	Pen Tablet PC Battery Kit	page 59

Agilent 86154A, 86153A, and N3419A System Accessories

Agilent Order Number	Option	Description	More Details On Page
86154A	036	Universal Serial Bus (USB) 4 port adapter	page 60
86154A	099	Multi-Receiver Connection Kit	page 58
86154A	210	Trimble Placer 455-DR GPS Receiver	page 57
86154A	211	Adapter Cable for use with a Trimble Placer GPS/DR Receiver	page 57
86154A	212	Adapter Box for use with Trimble Placer GPS 455 Receiver	page 57
86154A	230	Differential GPS Receiver Kit	page 57
86154A	425	Multiband Antenna	page 60
86154A	500	Receiver Power Kit	page 61
86154A	510	Vehicle Mounting Kit	page 61
86154A	507	Indoor Backpack	page 61
86154A	531	Briefcase Carrier	page 56
86154A	ABA to ARS	Country specific power localization	page 64

Agilent 86154A, 86153A, and N3419A System Accessories

External GPS Receiver Options

Option	Part Number	Description
210		Trimble Placer 455-DR GPS Receiver ^a with:
	E6450-80002	Magnetic Mount GPS Antenna for Trimble Placer
	8120-8650	Interconnect Cable (3) RS-232 DB9-M to DB9-F
	5182-1290	GPS Cigarette Lighter Power Adapter
	E7450-60005	Adapter Box Trimble Placer Receiver
		Documentation and software to calibrate the gyroscope and odometer is available on the Web at http://www.trimble.com
211		GPS/DR Receiver Adapter Cable
	E7450-60003	Adapter Cable
212	E7471-60007	Adapter Box for GPS/DR 455 Receiver with:
	E7450-60005	Adapter Box
	8120-8650	Interconnect Cables (3) RS-232 DB9-M to DB9-F
230	1150-5057	Differential GPS Receiver, RDS 3000 manufactured by DCI (Differential Corrections, Inc.). Includes utilities disk and Installation and Operator's Manual and:
	0960-0979	FM Antenna
	8120-8650	Serial Cable DB9-M to DB9-F
	5182-4794	Interconnect Cable RS-232 DB9-F to DB9-F

a. The Trimble Placer GPS 455 provides Dead Reckoning for use when the GPS signal cannot be received.

Agilent 86154A, 86153A, and N3419A System Accessories

Laptop PC Option

Option	Part Number	Description
010	E7450-60014	Laptop PC with a minimum specification of: Pentium II Processor Windows 95/98 (loaded) 64 Mbytes RAM 6 Gbytes Hard Disc 24 x CD-ROM Enhanced lithium ion battery pack
	F1445A	Auto power adapter 14.1 inch XGA TFT display

Miscellaneous Accessories

Option	Part Number	Description
020		Dual Port Ruggedized PCMCIA Serial I/O Card
	E7471-80004	Socket dual port ruggedized serial I/O card connects to two phones to the computer through the PCMCIA slot. Connecting four phones requires two PCMCIA slots on the computer and two dual port ruggedized serial I/O cards.
099		Receiver Interconnect Cable Kit
	E7450-60001	15-pin Interconnection Cable 380mm (15in) (short)
	E7450-60002	15-pin Interconnection Cable 635mm (24in) (long)

Agilent 86154A, 86153A, and N3419A System Accessories

Fujitsu Pen Tablet PC Options

Option	Part Number	Description
030	86154-60007	Pen Computer Kit including Pen Tablet PC Stylistic 2300 with a 1 year warranty and the following minimum specification and parts. Note: More information on the Stylistic 2300 pen computer can be found on the Fujitsu web site, http://www.fpsi.fujitsu.com/product/st2300.htm
		Pentium II Processor
		4 Gbytes Hard Drive
		64 Mbytes RAM
		Windows 98 (loaded)
	86154-60012	External 3.5" Floppy Disc Drive
	86154-90009	Pen Tablet Stylus
	86154-60008	AC Adapter
	E7474-90010	Pen Tablet Getting Started Guide
	86154-60055	Travel Case
86154-60009	In Service Case	
86154-60056	Harness for Service Case	
86154-60054	Hands Free Platform	
86154-60015	PCMCIA LAN Card	
032	86154-60016	Car Auto Power System (12-24 VDC input)
034		Pen Tablet PC Battery Kit, consisting of:
	86154-60010	Lithium Ion Battery Pack (spare)
	86154-60011	External Battery Charger
	86154-60008	AC Adapter

Agilent 86154A, 86153A, and N3419A System Accessories

Option	Part Number	Description
036	86154-60004	Universal Serial Bus (USB) 4 Port Adapter kit
	86154-60021	4 Port USB Hub
	8121-0136	Extension Cable

Indoor Antenna Options

Option	Part Number	Description
425	86154-60047	Multiband Antenna Kit
	86154-60059	PCS/Cellular/JCDMA Antenna (green)
	86154-60058	GSM/DCS/Korean CDMA Antenna (orange)
	86154-60061	3GPP Antenna (yellow)
	E6450-00013	Ground Plane
	E6450-60057	Cable: Antenna to Receiver
	1250-1753	F SMA Connector

Agilent 86154A, 86153A, and N3419A System Accessories

Portable Accessory Options

Option	Part Number	Description
500	86154-60005	Receiver Power Kit
	E6450-60051	Receiver Battery and Cable
	86154-60019	Receiver Battery Charger
507	86154-60006	Indoor Backpack and Accessories
	86154-60020	Indoor System Backpack
	86154-60057	Phone Pouch
	E7474-90010	Pen Computer Getting Started Guide
	E7474-90024	Back Pack Packing Information Sheet
510	86154-60033	Vehicle Mounting Kit
		Mounting Screws
507	86154-60006	Indoor Backpack and Accessories
	86154-60020	Indoor System Backpack
	86154-60057	Phone Pouch

86153A Retrofit Option

It is possible to have an internal GPS receiver retrofitted to your Agilent digital receiver. These are ordered using the **86153A** Internal GPS retrofit products. You will need to return your receiver to the [address](#) shown below to have the retrofit carried out.

The internal GPS retrofit includes:

Magnetic Mount GPS Antenna for internal GPS (Part Number: 1150-2085)

The process for obtaining an internal GPS retrofit is as follows:

- Order the **86153A** upgrade.
- Include the **serial and model number** of your existing digital receiver on the order to ensure that the retrofit is performed on the correct receiver.
- Ship your digital receiver to:

Agilent Technologies
1212 Valley House Drive
Rohnert Park, CA 94928
Attn: Factory Repair

For more information on packing and sending the receiver, refer to “Returning the Instrument for Service” in Chapter 5 of the *Getting Started Guide*.

Agilent N3419A vehicle-mounted display system

All N3419A vehicle-mounted display system components are independent of wireless access technology. They work with any Agilent wireless solutions.

Display

- 12.1-inch diagonal, flat-panel color LCD display with 800 x 600 resolution
- View multiple virtual front panels (VFPs) at the same time

Agilent 86154A, 86153A, and N3419A System Accessories

- Power cords included for use with both 120 V ac from a power inverter, or 12 V dc from a vehicle
- Laptop connections - RS232
- Large, bright display for use in direct sunlight, with adjustable brightness for nighttime viewing
- Pedestal mounted
- Application-specific keypad
- Transmission hump mounting (typical in sport utility vehicles)
- Flat floor mounting (typical in minivans)

Functions during the drive including:

- "Freeze" and re-start measurements
- Start and stop recording
- Maximize, normalize and minimize measurement (VFPs)
- Navigate between VFPs
- Start and stop calls
- Show or hide measurement and display controls
- Show or hide toolbars
- Add an auto-numbered note to the measurement data
- Open and navigate the window menu in the drive-test software
- Create a report
- Perform a tools re-configure
- Clear alarms and other dialog boxes
- Move between open windows applications
- Turn alarms on and off
- Enable/disable links

Power Localization Options

In order that the correct power supplies and mains cables are supplied with your system, it is necessary to have the correct power localization. The localization options listed below only change the power cord and charger types supplied. They do not affect the software or manual language, which is U.S. English.

Option	Description	
ARM	Argentina - English	
ARS	Asia Pacific (UK Cord) / English	
ABG	Australia - English	
A1X	Chile - English	
AKM	China - English	
ACE	Denmark - English	
ABB	Europe - English	
AKJ	Israel - English	
ACQ	South Africa / India - English	
ACD	Switzerland - English	
AKL	Thailand	
ABA	U.S. - English	
ABU	United Kingdom - English	

Part Number Summary

The following list summarizes the part numbers that can be ordered from Agilent Technologies.

NOTE

When ordering parts from Agilent Technologies, it is recommended that you **order using the system option numbers**

CDMA Systems - Agilent E7473A

TDMA Systems - Agilent E7474A

GSM Systems - Agilent E7475A

W-CDMA Systems - Agilent E7476A

cdma2000 Systems - Agilent E7477A

Over Air Systems - Agilent E7490A

Accessories - see Agilent 86154A and 86153A options.

However, if you have a need for a specific part, the following numbers can be used.

For more information on ordering parts or options, contact your local Agilent Technologies sales and service office.

Description	Part Number
Receiver	
AC/DC Power Supply for receiver	0950-2679
Magnetic Mount Cellular Band Antenna	1150-2061
Magnetic Mount Mini GPS Antenna for internal GPS – SMA	1150-2085
Magnetic Mount Mini GPS Antenna for internal GPS (Obsolete) – SMB	E6450-80002
Magnetic Mount PCS Band Antenna	E7475-60007

Part Number Summary

Description	Part Number	
Receiver (continued)	Antenna Adapter Connector (N Type to TNC)	1200-1897
	Firmware Write Enable Key	E6450-60007
	Cigarette Lighter Power Adapter	E6450-60010
	2 AMP, 32 V, FB fuse for Cigarette Power Adapter	2110-0002
	15-pin Interconnection Cable 380mm (15in) (short)	5182-4794
	15-pin Interconnection Cable 635mm (24in) (long)	E7450-60002
	Pulse trigger interface cable	E7450-60015
	Magnetic Mount 1.7-1.9 GHz Band Antenna	E7450-80004
	Magnetic Mount 1.9 - 2.1 GHz Band Antenna	E6455-80003
	Magnetic Mount 900 MHz Band Antenna	E7450-80005
	Magnetic Mount GSM 900 RF Antenna	E7471-60009
	Vehicle Mounting Kit	86154-60033
	Universal Adapter (TNC) for RF Antenna	1200-1897
	Magnetic Mount DCS 1800 RF Antenna	E7475-60006
	Magnetic Mount GSM/PCS 1900 RF Antenna	E7475-60007
	Universal Adapter for RF Antenna	E7475-80005
External GPS	Bulkhead Mount GPS antenna for Trimble Placer (Obsolete)	1150-5061
	Trimble Placer 455 GPS Receiver	1150-5058
	GPS Cigarette Lighter Power Adapter	5182-1290
	Interconnect Cable RS-232 DB9-M to DB9-F	8120-8650
	Magnetic Mount Mini GPS Antenna for internal GPS	E6450-80002
	Adapter Cable for use with a Trimble Placer GPS/DR Receiver	E7450-60003
	Adapter Box for use with Trimble Placer GPS 455 Receiver	E7450-60005

Part Number Summary

Description	Part Number
Adapter Box and RS-232 Interconnect Cables (quantity 3)	E7471-60007
Differential GPS	FM Antenna 0960-0979
	Differential GPS Receiver, RDS 3000 manufactured by DCI (Differential Corrections, Inc.). Includes utilities disk and Installation and Operator's Manual. 1150-5057
	Interconnect Cable RS-232 DB9-F to DB9-F 5182-4794
Phone Parts	Interconnect Cable for QCP 2700, QCP 820, QCP-1920, Sony CM-M1300, Sony CM-B1201SPR, and Sony CM-S1101STR phones E6450-60029
	Interconnect Cable for QCP-800, QCP-1900, Sony CM-D500, Sony CM-D600 phones E6450-60030
	Interconnect Cable for the Samsung SCH-1000 phone 8120-8754
	Powered Interface Cable for QCP-800, QCP-1900, Sony CM-D500, Sony CM-D600 phones E6450-60034
	Powered Interface Cable for QCP 2700, QCP 820, QCP-1920, Sony CM-M1300, Sony CM-B1201SPR, and Sony CM-S1101STR phones E6450-60033
	Interface Cable for Toshiba CD-10T J-CDMA Phone E7452-60003
	Powered Interface Cable for Toshiba CD-10T J-CDMA Phone E7474-60008
	GSM Phone Data Cable E7471-62005
	GSM Car phone and data kit E7475-60028
	Interface Cable for Motorola StarTAC TDMA Phone E7474-60004
	Powered Interface Cable for Motorola StarTAC TDMA Phone E7474-60006
	Power Interface Cable for Sagem Test Mobile E7475-62010
	Interface Cable for QCP-860, 1960, 2760 Phones E7474-60023
	Powered Interface Cable for QCP-860, 1960, 2760 Phones E7474-60031
Accessories	Extra Dual Port Ruggedized PCMCIA Serial I/O Card 1150-2067

Part Number Summary

Description	Part Number
Dual Port PCMCIA Serial I/O Card	E7471-80004
Single Port PCMCIA Serial I/O Card	0960-0992
Auto Power Adapter	86154-85001
Blank Software License Security Key	E7474-10007
Documentation	
Getting Started Guide	E7474-90035
Indoor Getting Started Guide	E7474-90038
E7473A CDMA System Information Guide	E7473-90019
E7474A TDMA System Information Guide	E7474-90034
E7475A GSM System Information Guide	E7475-90011
E7476A W-CDMA (UMTS) System Information Guide	E7476-90004
E7477A cdma2000 System Information Guide	E7477-90004
E7490A Over Air Test System Information Guide	E7490-90003

RF Connectors and Antennas

Options	Receiver Type	RF Connector Adapter	RF Antenna Part Number
300, 310	GSM900 Band	E7475-80005	E7475-80001
305	GSM-R Band	NA	NA
320, 330	DCS1800 Band	E7475-80005	E7475-80001
340, 350	GSM1900 Band	1200-1897	E7475-80002

For system Agilent E7475A Options 300, 310, 320, and 330 (GSM 900 and DCS 1800), the connection of the RF antenna to the receiver is made using one type of connection adapter. For Agilent E7475A Option 340 and 350 (GSM 1900) the connection is made using only the 1200-1897 connection adapter. The following diagram illustrates the connector types.

